



Diamond Bruting Wheel

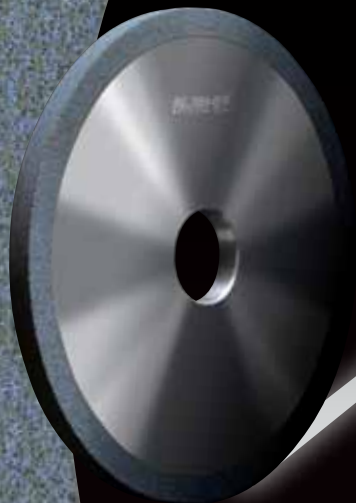
Diamond Bruting Wheel

Diamond Wheel to be used for Polishing and Bruting of Natural Diamonds.

Features

1. No Opening of inclusions (Jiram) on the Surface while Bruting!
2. Accurate Rounding of Girdle.
3. Higher Productivity.
4. Smoothest Cutting.
5. Best Surface Finishing of the Bruted Stones.

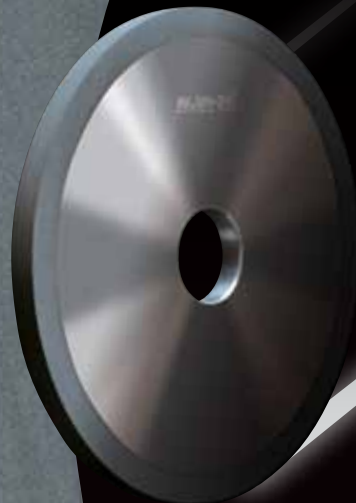




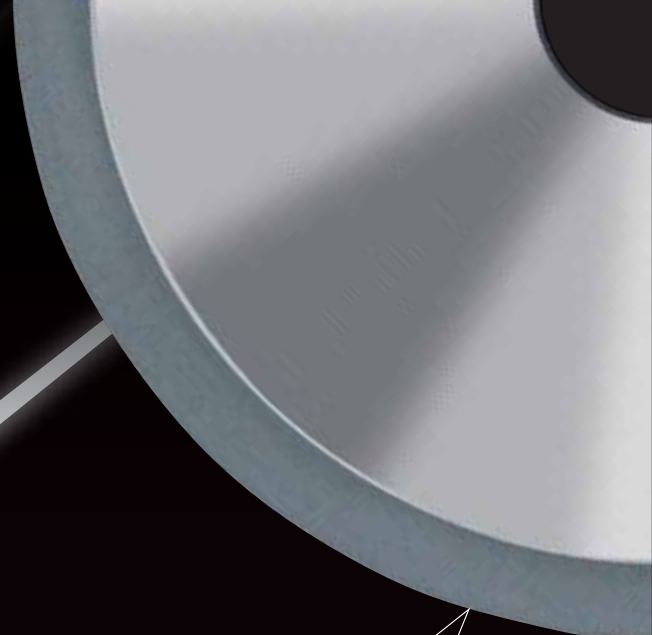
Model No. (R)
Hard Type



Model No. (C)
Medium Hard Type



Model No. (F)
Soft Type



$D170 \times T10 \times W10 \times H32$ mm



RUSHIT ENTERPRISES

240, Abdul Rehman Street, Mumbai 400003, INDIA.

TEL +91-22-23475412

FAX +91-22-23421251

E-mail info@rushit.in

www.rushit.in